



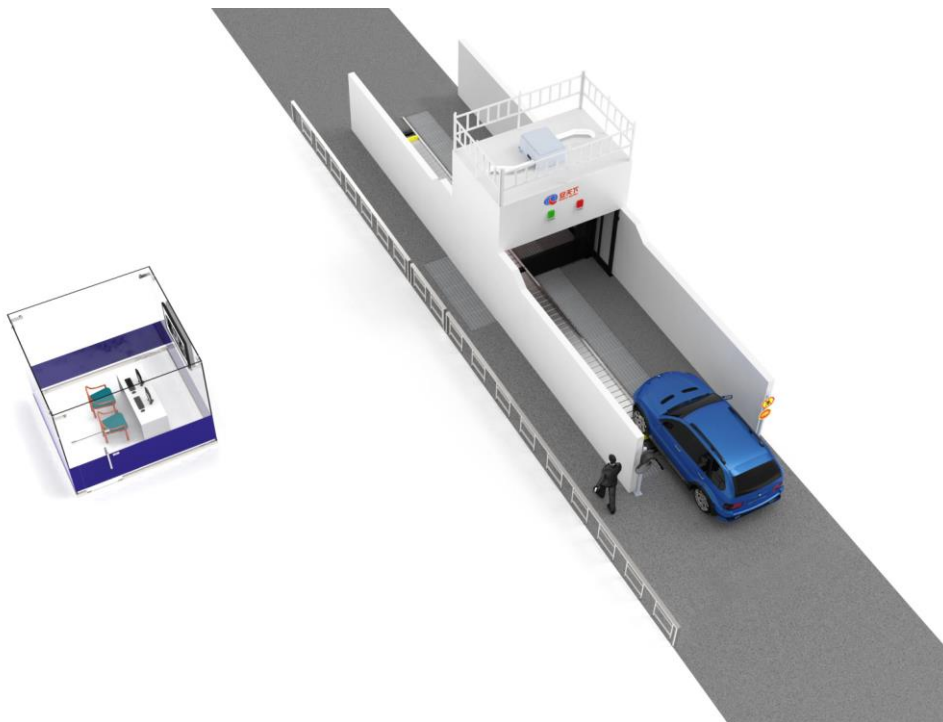
# SECURINESS

## AT-2800 Vehicle X-Ray Security Scanner.

Specifications are subject to change  Kontakt os venligst for mere information

### SECURINESS AT-2800 Vehicle X-Ray Security Scanner.

At2800 is designed as a passenger vehicles and small cargo (including minibuses) screening system, with higher penetration ability than AT2900. The X-Ray is from top to bottom, which give a better perspective than side scan for detection of contraband, illegal drugs, weapon and other dangerous objects. It's equipped with a gantry rail which can move forward the cars and vehicles automatically, leaving the drivers and passengers outside the cars, zero radiation. The product is part of the cargo and vehicle inspection system family of products that complies with the ANSI 43.17 regulations for general use.



#### Intense of use

State-of-the-art low-dose 300 kV X-ray scanner with 3 m x 3 m portal-shaped detection system for inspection of occupied passenger vehicle

Designed for inspection of cars for detection of contraband, illegal drugs, weapon and other dangerous objects;

Designed for operation at traffic control points and other places where total 100% cars inspection is necessary.

## **KEY FEATURES**

### **Gantry rail design moving the cars automatically**

It's equipped with a gantry rail which can move forward the cars and vehicles automatically, leaving the drivers and passengers outside the cars, zero radiation

### **High penetration**

The AT2800 is with 300kv generator producing X-Ray from top to bottom, offering high-quality X-ray images of inspected objects through 60 mm of steel at car speeds of 10 km/h.

### **High quality X-ray images**

To ensure proper detectability of the concealed objects, the AT2800 produces images with the 2% of the contrast sensitivity and 0.8mm copper wire detection capability.

### **Dual energy imaging**

The AT2800 has an automatic color coding for materials separation (3 colors) feature allowing distinguishing between organic, non-organic and metal materials. This feature helps the operator to detect dangerous object from the various materials.

### **Radiation safety**

The AT2800 ensures the low dose for driver and passenger operation (complies with ANSI 43.17 standard) as well as protection of the operator. The inspection portal is equipped with the video surveillance system to avoid the inspection of the passers-by.

### **Automatic recognition of the license plate number (option)**

With the additional camera (option) the AT2800 can identify and store the license plate number of each scanned vehicle.

### **Under video vehicle surveillance (option)**

Upon request, the AT2800 can be provided with the video surveillance system for under-vehicle inspection.

## Physical Specifications

Equipment size 16.5(L) \* 6.5(W) \* 5.5(H) M

Installation area ideally 16.5(L)\* 6.5(W) \* 6.5(H)M

## General Specifications

Tunnel size 3(L) \* 3(H)m

Scanning Speed 5-10km/h

Typical throughput 150pcs vehicles/hour

Max Vehicle length 20m and extendable

Penetration Typical 65mm steel, application 40mm steel

Wire Resolution Dia 1.0mm copper wire

Mix Dose to passengers <0.2µsv/ scan

Dose rate outside Public area<0.5µsv compliant with IAEA standard

Power Consumption Max. 3KVA

Operator's workstation PC-based workstation with the 27" LCD display

## X-ray Generator(single)

Dual energy accelerator 300kv

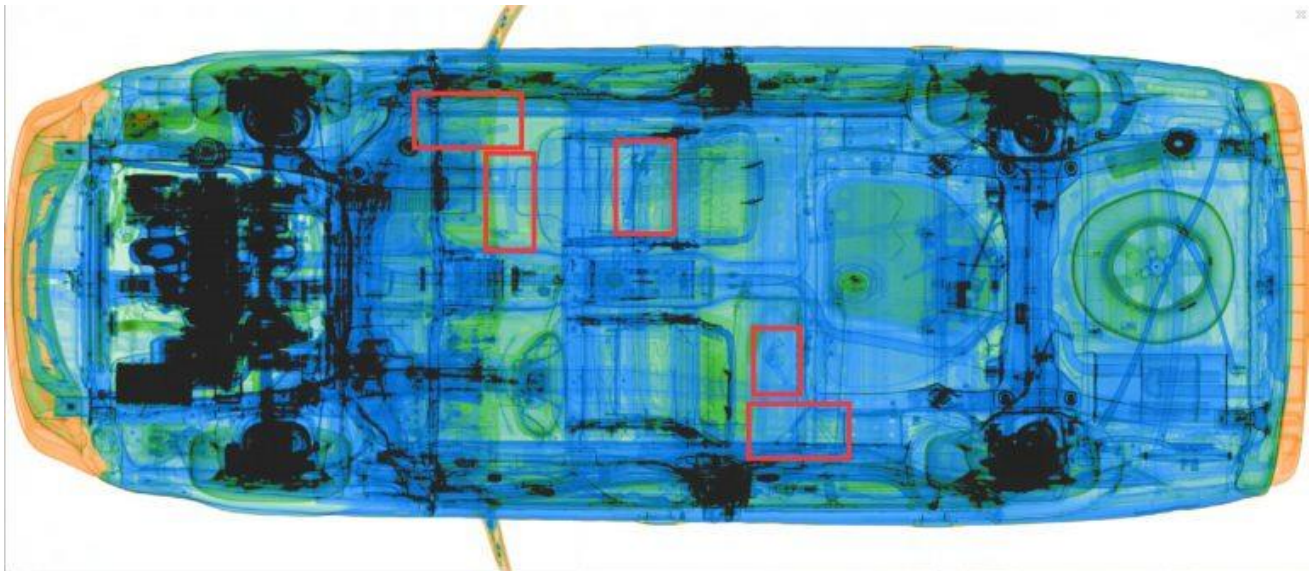
X-Ray direction from top to bottom

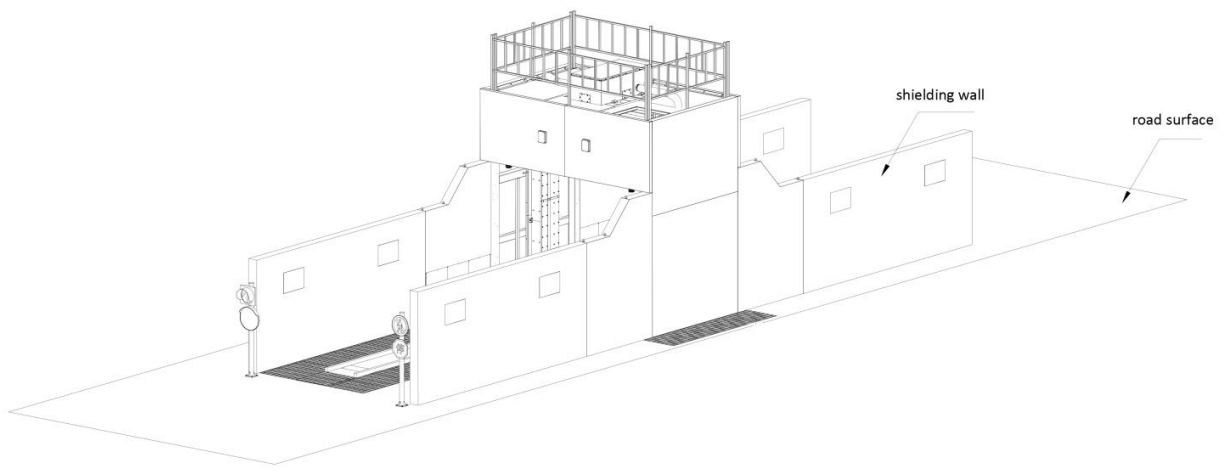
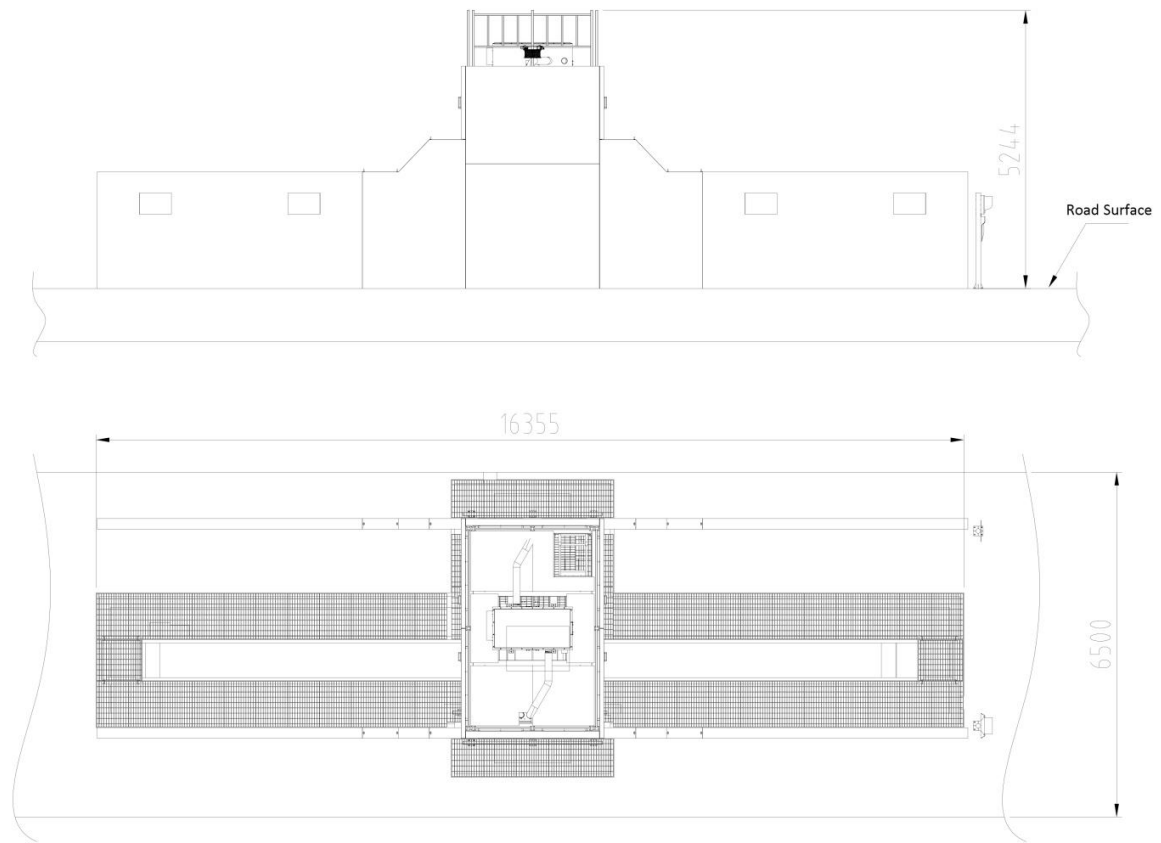
## Operating Environment

Operation temperature/Humidity -15°C- 55°C/ 5°C- 95°C (non- condensing)

Storage temperature/Humidity -40°C- 70°C/ 5°C- 95°C (non- condensing)

Operation Power 220VAC (±10%) 50±3Hz (Optional:100VAC,110VAC,120VAC,200VAC)





Remarks:

1. The area for equipment is 16.5m \* 6.5m (another 3m height required for installation operations)
2. The height of the equipment
  - 2.1 The gantry rail need be built underground
  - 2.2 If can't do underground, should build extra base to put in the gantry rail