

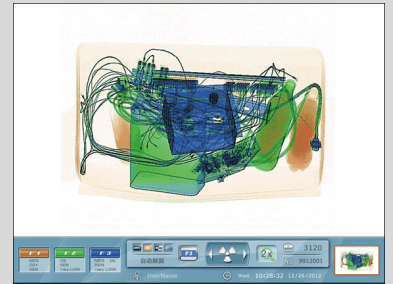


SECURINESS

Eastimage 100100M

www.securiness.com  Kontakt os venligst for mere information






Mobile X-ray Security Inspection Equipment



SECURINESS Eastimage Model 100100M

The 100100M is a comprehensive mobile inspection system that provides on-the-go detection capability for all security environments.

Technology features

-  Flexible, mobile x-ray security inspection equipment High resolution and penetration
-  Comfortable internal working condition
-  Easy for the passengers and high inspection efficiency
-  Integrated with EI-100100
-  Stable and superior performance

Cabinet X-ray Inspection General Specification

Tunnel Size	1010 mm (W) x 1010 mm (H)
Conveyor Speed	0.2 m/s
Film Safety	Film Safety ISO 1600 Film



www.securiness.com

X-ray Leakage	Compliant with international standards
Max. Load	200 kg
Resolution	Typical: 40AWG, Standard: 36AWG
Penetration	Typical: 32 mm steel, Standard: 27 mm steel
Spatial Resolution	Horizontal: Φ 1.0 mm & Vertical: Φ 1.3 mm
Anode Voltage	160 KV (adjustable)
Cooling & Running Cycle	Sealed oil cooling & 100 %
X-ray Sensor	Multi-Energy L photoelectric diode array detector
Power supply system	Synchronous, automatically trigger and calibration
Power	5.5 KW
Dynamo	7.1 kw/3600rpm, 357 cc, 4 stroke air cooling

Optional Function

High Density Area Alarm
 Black Box
 TIP Threat Image Projection
 X-auto Sight Contraband Auxiliary Recognition System
 OTP Operator Training Program
 One Key to Shutdown

Vehicle General Specification

Vehicle Model	IVECO power daily 2.8T-V42 or similar
External Dimension	5990 mm (L) x 2100 mm (V) x 2770 mm (H)
Weight	3950 Kg around (including X-ray)

White lacquer, aluminum guard board, abrasive floor, back door of the operating room, reversible lock

Dynamo and cables is installed at the back door to supply power. Air conditioner

System solutions

(Alle priser er eksklusive moms, levering og klargøring)

Pris DKK

Ring venligst for pris