



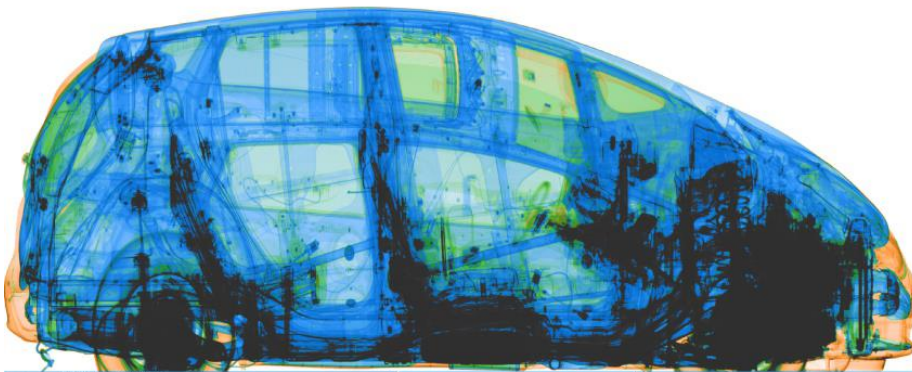
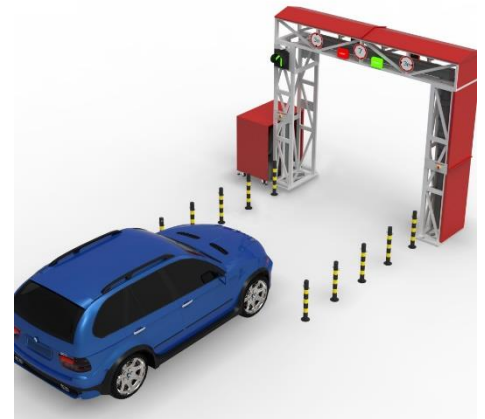
# SECURINESS

## AT-2900 Vehicle X-Ray Security Scanner.

Specifications are subject to change  Kontakt os venligst for mere information

### SECURINESS AT-2900 Vehicle X-Ray Security Scanner.

AT2900 is designed as a passenger vehicles and small cargo (including minibuses) screening system. Due to its flexibility and compact design it can fit into most entrance portals and can be used discreetly to scan visitors to high security locations. The product is part of the cargo and vehicle inspection system family of products that complies with the ANSI 43.17 regulations for general use body scanners. With its ultralow radiation dose it is an effective solution for scanning vehicles with passengers and drivers.



#### Intense of use

State-of-the-art low-dose 200 kV X-ray scanner with 3 m x 3 m portal-shaped detection system for inspection of occupied passenger vehicle, designed with innovative "drive-through" technology;  
Designed for inspection of cars for detection of contraband, illegal drugs, weapon and other dangerous objects;  
Designed for operation at traffic control points and other places where total 100% cars inspection is necessary.

## KEY FEATURES

Drive-thru technology

Occupied vehicle scanning capability: passengers can stay in their cars during scanning process, driving them under their own power through the inspection portal.

Small footprint

The deployment of the AT2900 requires a relatively small ground surface without special requirements for additional infrastructure.

### High penetration

The AT2900 produces high-quality X-ray images of inspected objects through 20 mm of steel at car speeds of 10 km/h.

### High quality X-ray images

To ensure proper detectability of the concealed objects, the AT2900 produces images with the 2% of the contrast sensitivity and 0.8mm copper wire detection capability.

### Dual energy imaging

The AT2900 has an automatic color coding for materials separation (3 colors) feature allowing distinguishing between organic, non-organic and metal materials. This feature helps the operator to detect dangerous object from the various materials.

### Radiation safety

The AT2900 ensures the low dose for driver and passenger operation (complies with ANSI 43.17 standard) as well as protection of the operator. The inspection portal is equipped with the video surveillance system to avoid the inspection of the passer-by's.

### Automatic recognition of the license plate number (option)

With the additional camera (option) the AT2900 is able to identify and store the license plate number of each scanned vehicle.

### Under video vehicle surveillance (option)

Upon request, the AT2900 can be provided with the video surveillance system for under-vehicle inspection

### Physical Specifications

Equipment size 16.5(L) \* 6.5(W) \* 5.5(H) M

Installation area ideally 16.5(L)\* 6.5(W) \* 6.5(H)M

### General Specifications

Tunnel size 3(L) \* 3(H)m

Scanning Speed 5-10km/h

Typical throughput 150pcs vehicles/hour

Max Vehicle length 20m and extendable

Penetration Typical 65mm steel, application 40mm steel

Wire Resolution Dia 1.0mm copper wire

Mix Dose to passengers <0.2µsv/ scan

Dose rate outside Public area<0.5µsv compliant with IAEA standard

Power Consumption Max. 3KVA

Operator's workstation PC-based workstation with the 27" LCD display

### X-ray Generator(single)

Dual energy accelerator 300kv

X-Ray direction from top to bottom

## Operating Environment

Operation temperature/Humidity -15°C- 55°C/ 5°C- 95°C (non- condensing)

Storage temperature/Humidity -40°C- 70°C/ 5°C- 95°C (non- condensing)

Operation Power 220VAC (±10%) 50±3Hz (Optional:100VAC,110VAC,120VAC,200VAC)

- password-protected login of the operator
- Automatic real-time display of the inspected vehicle
- Brightness and contrast adjustment of acquired image
- High-density and low-density objects display feature
- Zoom in and pan functions (up to 8x)
- Block/whit

